



HarborTechnologies, LLC.



MaineDOT

Knickerbocker Bridge in Boothbay, Maine

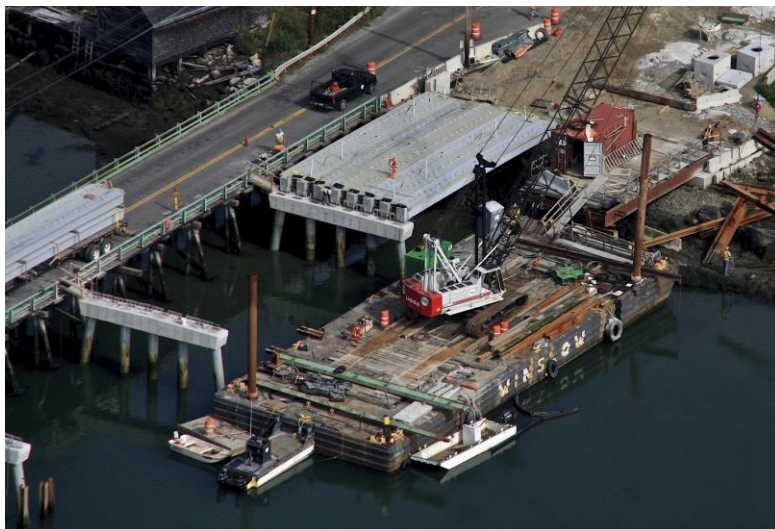
Owner: Maine Department of Transportation

Engineer: Wyman & Simpson, Inc.

Contractor: TENG & Associates, Inc.

The Maine Department of Transportation selected Hybrid Composite Beams (HCB's) for use on the construction of the new Knickerbocker bridge. HCB's were chosen as they have been approved by the Federal Highway Administration for 100 year service life, their lightweight nature, and ease of construction. Capturing the benefits of steel, concrete and composites HCB's are a unique and cost effective method of building the bridges of the future.

Sixty-four (64) hybrid composite beams were supplied in lengths of 70'.



Beams installed on the first of 8 bents



Completed Knickerbocker Bridge