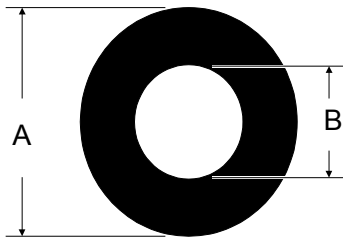


# EXTRUDED FENDERS



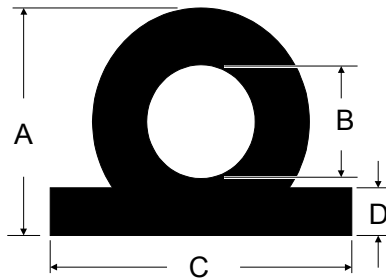
View Our Website - [www.schraderco.com](http://www.schraderco.com)  
Call Today - 425-377-1550

## Cylindrical Fenders



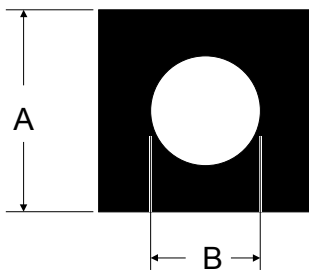
Part No.	Dims. - Inch		Wt./Ft. Lbs.	R/E Kip/Ft.Kip
	A	B		
F30000	3	1.5	3	14
F38000	5	2.5	7	10
F39000	6	2	14	11
F31000	8	4	18.5	10
F32000	10	5	30	6.2
F35000	12	6	42.5	5.3
F36000	15	7.5	68.5	3.5
F33000	18	9	97.5	2.9

## Cylindrical Wing Fenders



Part No.	Dimensions - Inch				Wt./Ft. Lbs.	R/E Kip/Ft.Kip
	A	B	C	D		
F70000	3	1	6	.75	4.3	25
F78000	4	2	7.5	1.0	10	19.5
F71000	6	3	9	1.5	15.5	13.5
F81000	8	4	12	2.0	30	11
F84000	10	5	15	2.5	44	9
F73000	12	6	18	3.0	58.5	6.3

## Square Fenders



Part No.	Dims. - Inch		Wt./Ft. Lbs.	R/E Kip/Ft.Kip
	A	B		
F60000	4.5	1.5	4.5	2.0
F62000	6	2	14	16
F56000	7	2.5	22.5	12.5
F50000	8	3	29.5	10
F57000	10	4	45	8.5
F51000	12	5	63	7
F52000	14	6	81	3.7
G62000	16	7	112	2.5

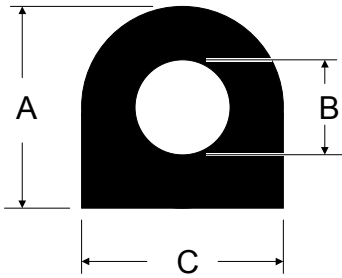
# Morse Rubber LLC

3588 Main St.  
Keokuk, IA 52632 U.S.A.

Tel. 319 524 8430  
800 553 7036  
Fax 319 524 7290

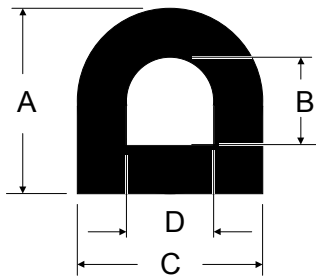
# EXTRUDED FENDERS

## D- O Bore Fenders



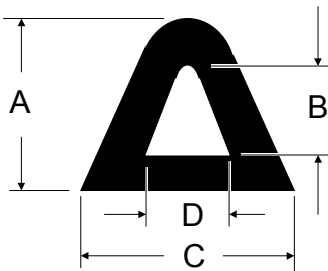
Part No.	Dims. - Inch			Wt./Ft. Lbs.	R/E Kip/Ft.Kip
	A	B	C		
F92000	6	2.5	5	11.5	15.2
F95000	8	3	8	22	10
G05000	10	4	10	38	8.6
F93000	12	5	12	54	7.7
F98000	14	6	14	73	4.2

## D- D bore Fenders



Part No.	Dims. - Inch			Wt./Ft. Lbs.	R/E Kip/Ft.Kip
	A	BxD	C		
G54000	6	3	5	11.5	15.2
F90000	8	4	8	22	10
G07000	10	5	10	38	8.6
F97000	12	6	12	54	7.7
G06000	14	7	14	73	4.2

## Slope D- Fenders



Part No.	Dims. - Inch				Wt./Ft. Lbs.	R/E Kip/Ft.Kip
	A	B	C	D		
F94000	3.75	2.25	4.5	2	4.5	16.7
F91000	6	3	6.75	2.37	12.3	13.3

**Morse Rubber LLC**

3588 Main St.  
Keokuk, IA 52632 U.S.A.

Tel. 319 524 8430  
800 553 7036  
Fax 319 524 7290