

# Materials Engineering Unit

241 Erie Street, Room 234  
 Jersey City, NJ 07310  
 Tel: 201-216-2952 Fax: 201-216-2949



THE PORT AUTHORITY OF NY & NJ

TRANSMITTAL

No. C132

PROJECT: LGA-Runway Safety Area Improvements

DATE: 10/14/2014

TO: EIC Associates Inc  
 140 Mountain Avenue, Suite 303

CONTRACT: LGA-124.185

Springfield, NJ 07081

ATTN: Raymond Sciahetano

WE ARE SENDING:	STATUS LEGEND:		SUBMITTED FOR:
<input type="checkbox"/> Shop Drawings	Approved (APP)	Closed (CLO)	<input type="checkbox"/> Approval
<input checked="" type="checkbox"/> Letter	Approved as Corrected (AAC)	For Record Only (FRO)	<input type="checkbox"/> Your Use
<input type="checkbox"/> Prints	Approved as Noted - Resubmit (ANR)	Incomplete (INC)	<input type="checkbox"/> As Requested
<input type="checkbox"/> Change Order	Not Approved (NA)	New Item (NEW)	<input type="checkbox"/> Review and Comment
<input type="checkbox"/> Plans	No Exceptions Taken (NET)	Superseded (SUPS)	
<input type="checkbox"/> Samples	Reviewed With No Comments (RWNC)	UnSubmitted (UNS)	
<input type="checkbox"/> Specifications	Reviewed With Comments - Resubmit (RWC)		
<input checked="" type="checkbox"/> Other: Made from CTS 132	SENT VIA: Mail		
	Tracking Number:		

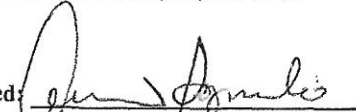
PACKAGE	SUBMITTAL	REV.	DATE	DESCRIPTION	Remark	STATUS
02363	02363B0005	R000	10/9/2014	Product data sheet of Carmel Corrosion Systems		APP

Remarks: Approvals shall not relieve the Contractor of any responsibility as required by the Contract or waiver any further authority of the Engineer or modify or waive any provisions of the subject Contract with regard to this material(s) or its approval.

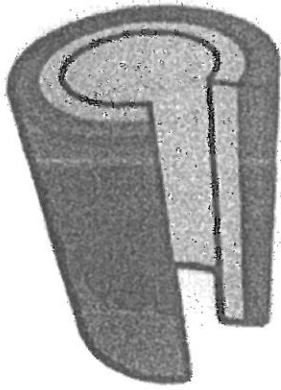
Material(s), which do not conform to the contract documents, will be subject to rejection at the job site by the Resident Engineer.

If you have any questions, please call Alex Alvarez of my staff at (201) 216-2975. Our fax number is (201)216-2949.

CC: A. Martinez, R. Armocida, A. Alvarez, MF

Signed:   
 Casimir Bognacki  
 Chief of Materials Engineering

PA Submittal No: 02363B0005R000  
Carmel Corrosion Envirapwrap HD Catalog Cuts



# **CARME CORROSION SYSTEMS**

**14 MORSE RD  
BENNINGTON, VT 05201**

**HD 24"Ø  
PILE PROTECTION SYSTEM**

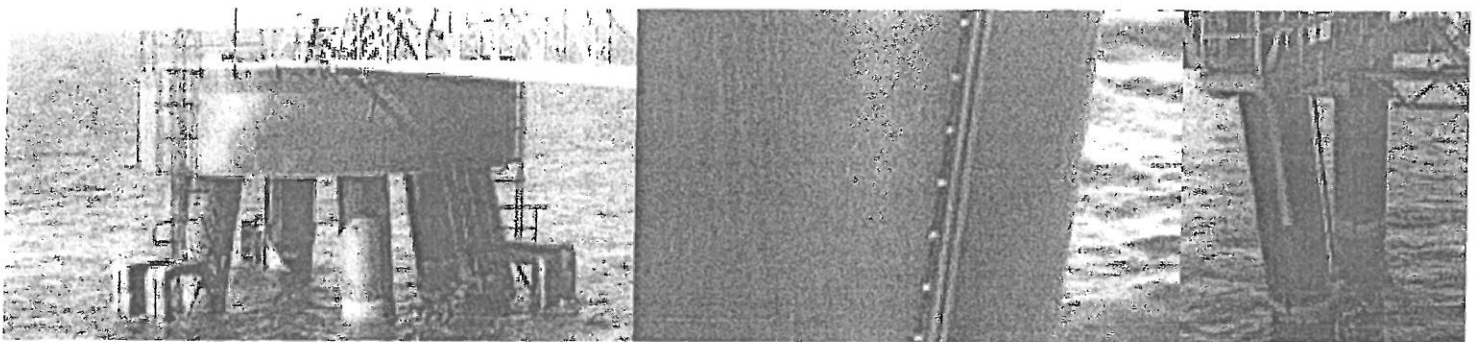
**LGA 124-185**

**P.O. # 13-008-193**



**The best corrosion protection right where it's needed**

- Quick one piece installation
- UV - stable
- Abrasion resistant
- Shape and size conforming
- Custom engineered
- Easy inspection remove/refit
- No Hot work permit required
- 10-year warranty



ating the supply of oxygenated water to the marine structure's

## ucted?

### polyurethane layer

abrasion-resistant and UV-stable. term environmental outer barrier.

### ory-enhanced

### imide reinforcing scrim

g installation, these scrims create hoop- n forces sufficient to resist long-term

### polyurethane layer

### ster felt inner layer

corrosion inhibitors or biocides are pre-blended into a range of phobic and thixotropic gels. These gels are factory-applied to the bent felt inner layer in concentrations providing product longevity.

## tructed?

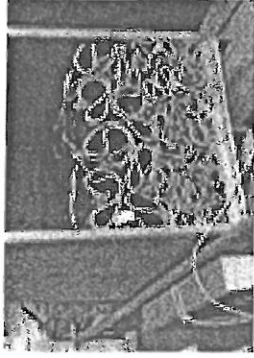
ility located in Vermont USA. As suppliers to the U.S army, our es, fully comply with U.S and International Standards (ISO 9001 : e manufactured in the U.S by approved suppliers. Our High quality 'inspected and tested to ensure the required standards and our erialized and materials are fully traceable.

### Long-term performance

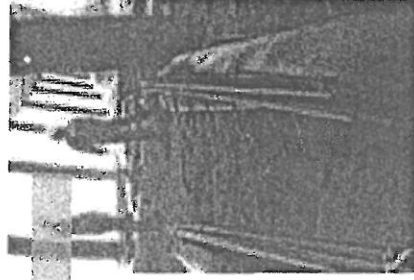
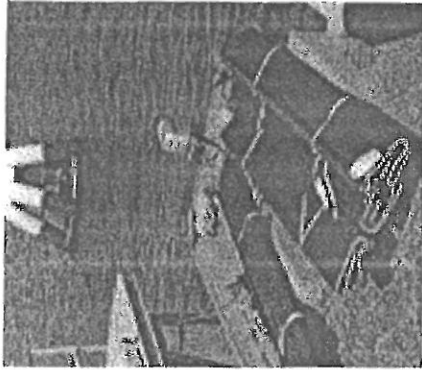
Annual inspection shows corrosion rate reduced to

0.24/28 mil per year (1 mil = 1/1000 of an inch).

Jacket design resists impact from vessels and floats.



Preparation: The wraps have been removed from the shipping crate, factory-gelled and ready for installation.



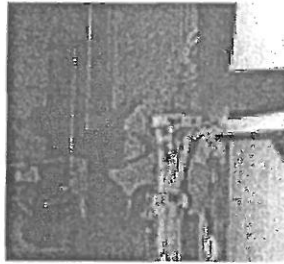
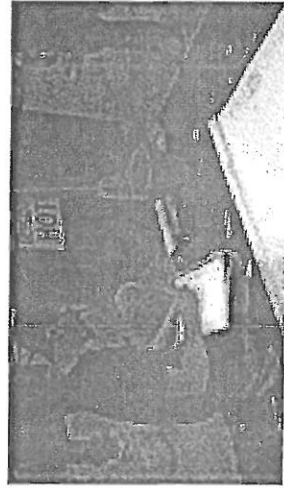
Jetty



The Envirawrap is delivered ready for installation, fitted with lifting lugs bonded to outer surface.

In operations such as these it is common to from underside of deck to lower splash zone

## CARMEI CORROSION SYSTEMS



around modules are installed using relatively little manpower supervision with the minimum of equipment and skill.

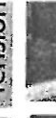
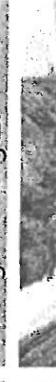
1 min  
Wrap is positioned.

2 min  
Aligning tension bolts.

5 min  
Closing the flanges.

12 min  
Attaching fasteners.

20 min  
Tension





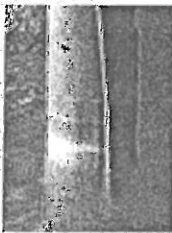
## CCS wraps

Induced tension wrap systems, provide an effective method of corrosion and environmental protection of marine structures.

### SINGLE PLY (Standard)

#### Easy one-piece installation

Full-length closure flanges are factory-fitted with corrosion-resistant self-threading fasteners or bolt sets upon request.



#### Minimal surface preparation

Corrosion-inhibiting gel, flows to totally encapsulate and protect the substrate without the use of primers, fillers or tapes. The mechanical removal of marine growth and delaminated iron oxide is all that is necessary.

#### Corrosion rate monitoring

May be fitted with weight loss coupons or remote corrosion rate monitoring.

#### Environmentally safe

Residual elasticity within the multilayer fabric safely maintains the wrap in position and prevents leaching of the corrosion inhibitor into the environment.

#### Custom made to fit

Suits any diameter from 50 mm to 3 meters. May be interlocked to accommodate any required protected length.

#### Built for the toughest environments

Withstands the degradative influences of environmental UV, ozone and temperature variations. Highly abrasion- and impact-resistant.

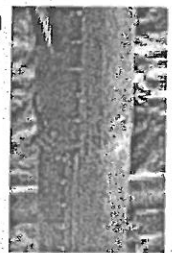
#### Inspections made easy

In the unlikely event of exterior damage the wrap can easily be removed and replaced to allow for substrate inspection.

### DOUBLE PLY (Heavy-Duty)

#### Multilayer, heavy-duty construction

Double Ply is the heavy-duty, multi-scrim version of the CCS Single Ply. It is specifically designed to provide protection to offshore oil and gas risers or inshore applications subject to external impact damage.



#### Easy installation

As with the CCS Single Ply, installation has been reduced to its simplest possible form, saving hours of diver and rigging time. Does not require substrate shotblast preparation.

#### Custom-made for tough conditions

Supplied in interlocking modular lengths. Polyurethane provides the highest abrasion resistance.

#### Active protection

Available with unique anti-fouling outer layer. Provides active protection with environmentally safe corrosion inhibitors.



Carmel Corrosion Systems, Inc.  
14 Morse Road,  
Bennington, VT 05201,  
USA  
info@carmelcorrosionsystems.com  
+1 802 442 5115